

Product Datasheet

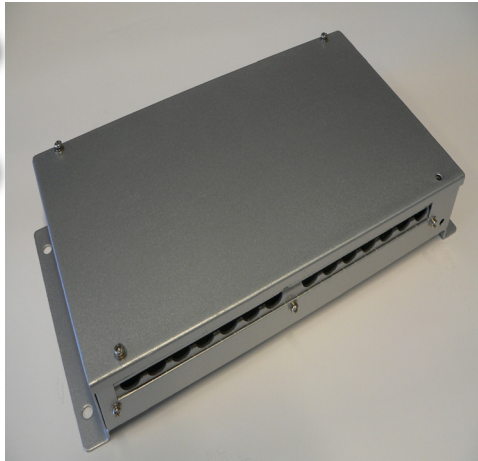
TS-104 TRANSDUCER SWITCHER

SKIPPER

**Art. No.
TS-104**

**Trans-
ducer Switcher**

For all Echo sounders



With this overlay



or



A 4 to 1 transducer switcher allowing the user to select which transducer is to be shown on a single channel echo sounder. The unit allows up to 4 transducers of the same frequency to be switched onto a single channel.

SKIPPER Electronics manufacture marine electronics for the merchant fleet as well as the fishing fleet, based on experience, research and tradition. Our products are known worldwide for reliability, sophistication and good value for money.

Main Functions:

Press button channel selection
LED-display of selected channel (with dimming) switch / pulse synchronisation

Applications:

Switching of multiple single frequency transducers. For use on larger vessels, platforms etc. that need to see depth at various places on vessel, but not simultaneously.

Options:

The Control unit is supplied with both vessel and platform front overlay, these can be changed during installation.

Product Datasheet

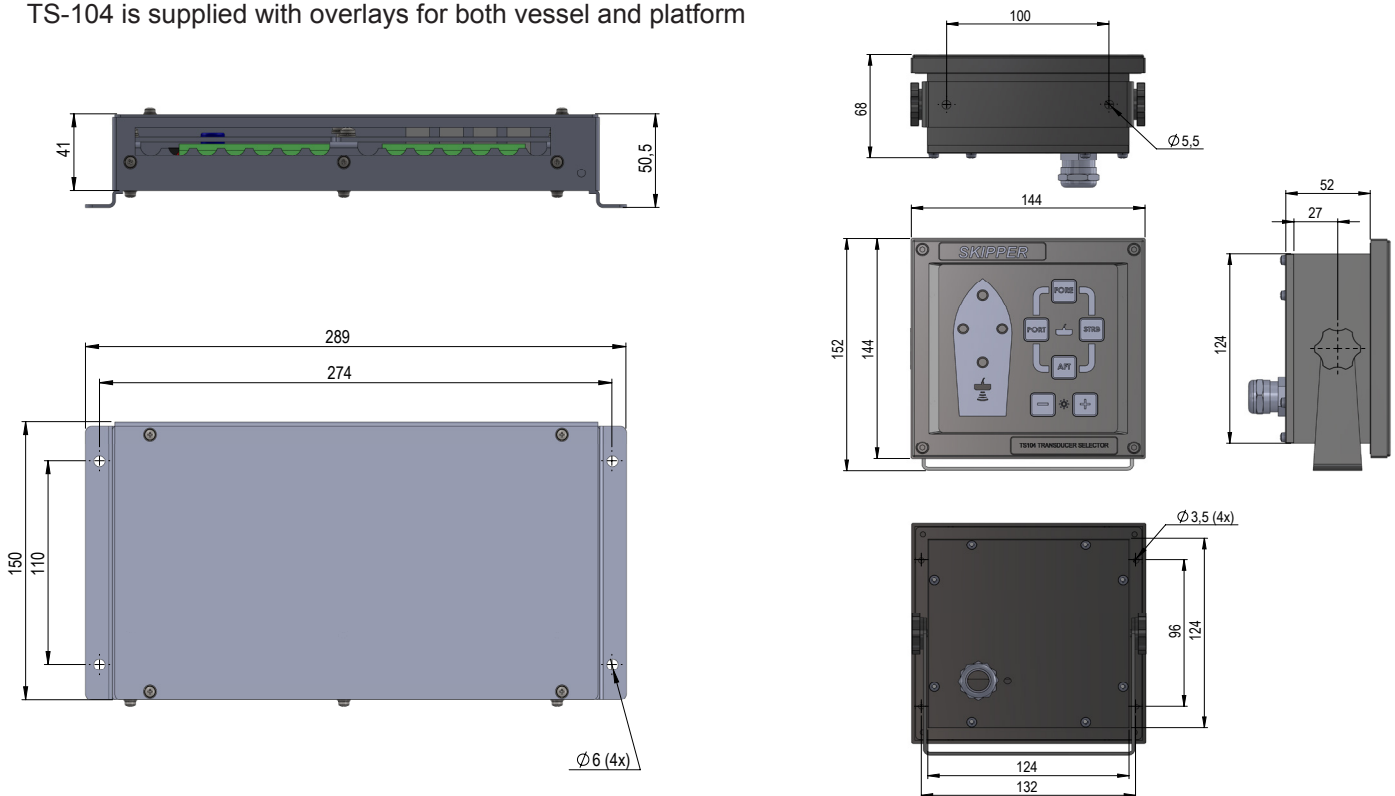
SKIPPER

TRANSDUCER SWITCHER

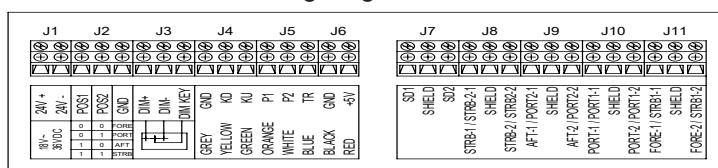
Specifications

	Part number	Description
Part number	TS-104	Transducer switcher
To be used with	All Echo sounders (GDS101, GDS102, ED165, etc)	
The Transducer switcher contains	TS-104-S TS-104-I	Transducer selector Transducer interface
Input Voltage	24 V/DC (18-36 V)	
Selector unit rating	(IP23)	
Interface unit rating	(IP23)	
Approvals	(EMC CE) IEC60945	
Inputs	Remote dimming input (pulse) 4 transducers	
Output	1 Echo sounder	
Weight	3 kg	
Packaging dimensions / weight	31 x 22 x 12 / 3.2 kg	

TS-104 is supplied with overlays for both vessel and platform



Wiring diagram



Selector connection

Transducer connection

SKIPPER

SKIPPER Electronics AS
Enebakkeveien 150
P. O. Box 151, Manglerud
0612 Oslo, Norway

E-mail: support@skipper.no
Tlf: +47 23 30 22 70
Fax: +47 23 30 22 71
Co. reg. no: NO-965378847 - MVA

www.skipper.no

Date: August 2014

Edition: 06-08-2014